

## Adding a Lining to your *Muskoka* Hoodie...

Since first released in 2015 as “Autumn Grace”, the [Muskoka](#) fleece dress pattern by Pollywoggles has become a staple in my daughter’s wardrobe. One of the most-used options at our house is the hoodie.

The basic hoodie pattern shows how to make a single-layer hood in fleece. Very quickly I was asked whether or not this hood could be lined... and the answer is, *absolutely!* Adding a thin knit lining gives the hood a bit more weight, encloses the visible seams inside, and helps prevent static for those in dry climates (and for kids with really fine hair!).

Here is a little “How-to” for those who want to give it a try...

### *Additional Fabric Requirements:*

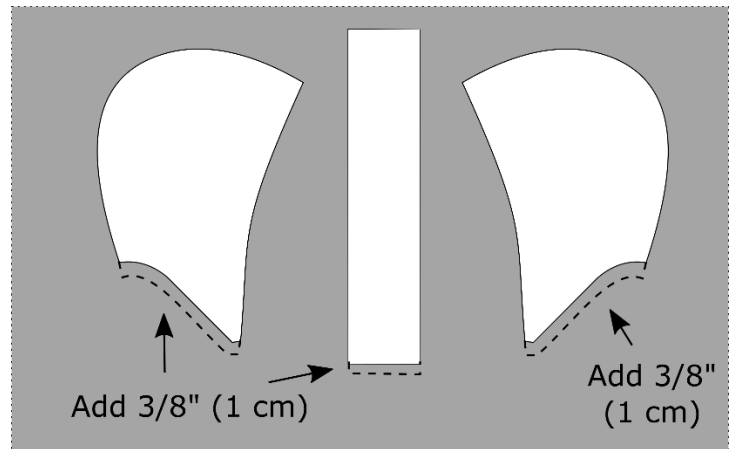
Thin knit fabric, suitable for lining your hood. (2-way or 4-way stretch will work)  
Suggestions include 95/5% cotton/lycra jersey, or interlock.

The hood lining 1/3 of the width of a 60” wide bolt, and 14”-19” (36-48 cm) of length.

### *Cutting Guide:*

You will need to use the hood template pieces from your Muskoka Expansion Pack, and cut a second hood using your lining fabric.

For the lining add an additional 3/8” (1 cm) of seam allowance to the **BOTTOM** (and only the bottom) of your template pieces, as you will be enclosing the seams at the neckline in between the hood layers.



Follow the instructions in the Muskoka Expansion Pack “Well Hello, Hoodie” option, until you have completed Step I.

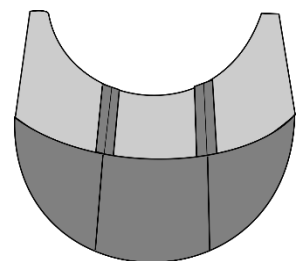
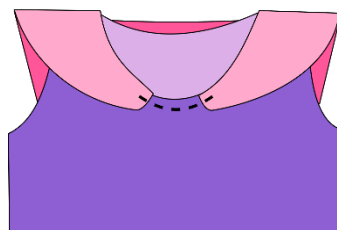
Construct the hood lining the same way as the outside hood (Steps A-C) but with a 1/2” (1.25 cm) seam allowance.

Then use the following steps to create and attach your hood lining.

### Attaching the Hood Lining

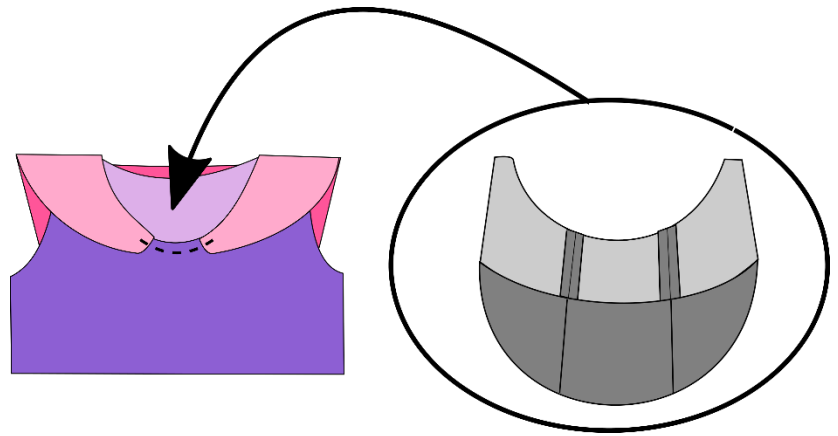
(i) Your dress/tunic will resemble what is shown here with the hood loosely draped on the outside of your dress/tunic and the very front of the hood and neckline stitched together with a stay stitch.

Take the hood lining you have put together, and place it right sides out as shown.

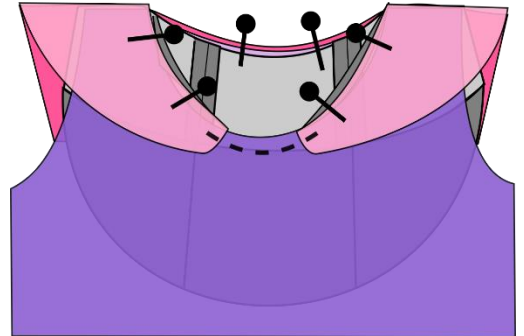


(ii) Keeping the hood lining right sides out, insert it inside the neck opening of your dress/tunic.

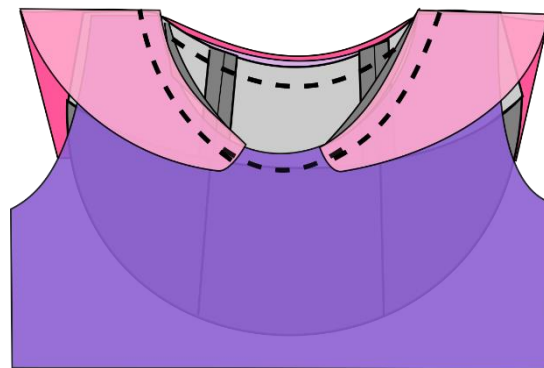
*This will mean that the right side of your hood lining is together with the wrong side (the inside) of your dress/tunic.*



(iii) Match up the placement of the front ends of your hood lining with placement of the front ends of your outer hood. Pin in place. Then stretch both the hood lining and the outer hood to line them BOTH up with the neckline of your dress/tunic. Pin evenly with the main garment sandwiched between the two layers of your hood.



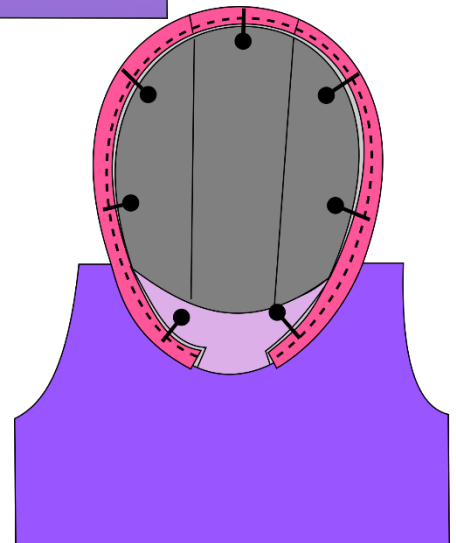
(iv) Stitch together with  $3/8$ "(1 cm)



seam allowance.

(v) Flip up both the outer hood and the hood liner up (it's starting to look like a hood now!). Line up the raw edges of your hood and hood liner, pin and baste together with a  $1/4$ " (6mm) seam allowance.

Return to the instructions found in the Muskoka Expansion Pack, at Step N, for how to attach your hood binding. The only thing that is different in the remaining steps is that the binding will now enclose BOTH the outer hood and liner.



Have fun making your *Muskoka* with the hoodie option... and I would love for you to come share your creation in the [Sewing Group](#) on Facebook!